

## PROGRAM STRUCTURE

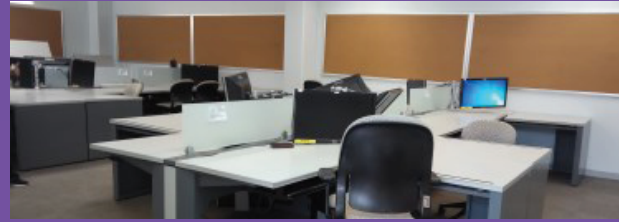
Course	No. of Courses	Credit Hours
Core	21	53
College	11	31
Major	19	70
Electives	3	9
<b>TOTAL</b>	<b>54</b>	<b>163</b>

## DEGREE PLAN



## FACILITIES

Smart classrooms with Blackboard, Smart board and Modern Design Studios equipped with drawing tables and computers with up-to-date applications.



## ADMISSION REQUIREMENTS

- ↳ Completed online application
- ↳ Secondary school certificate or equivalent
- ↳ General Aptitude Tests (Qudrat) or equivalent (SAT1)
- ↳ Standard Achievement Admission Test ( SAAT- Tahseely) or equivalent ( SAT2)
- ↳ PMU English Placement Test or valid IELTS certificate (Academic version) / TOEFL iBT with acceptable scores



## HOW TO APPLY

- Apply Online → Receive verification email
- Complete your online application → Receive Acceptance
- Pay the 1st installment



APPLY



PAY

## ADMISSIONS OFFICE

✉ enrollment@pmu.edu.sa

☎ 800 1230 123 / 📞 +966 13 849 8880

IE/GM/BMP/COAD Flyer 0023-2022



جامعة الأمير محمد بن فهد  
PRINCE MOHAMMAD BIN FAHD UNIVERSITY

## ARCHITECTURE



كلية العمارة والتصميم  
COLLEGE OF ARCHITECTURE AND DESIGN

WANT MORE INFO?  
PMU.edu.sa

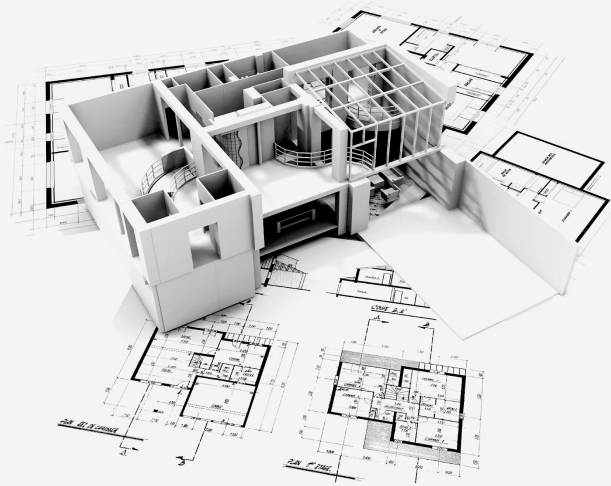
✉ architecture@pmu.edu.sa

☎ +966 13 849 5465 / +966 13 849 9390

🐦 @PMUOFFICIAL 🐦 @PMU\_KSA



## INTRODUCTION



The PMU Architecture program focuses upon two contemporary trends in architectural education and practice:

- 1) practice intensive focus on technology, especially digital technology
- 2) research-informed design and practice that is grounded in scientifically rigorous evidence.

The PMU architecture program relies heavily upon studio courses that employ a project-based learning method. However, a distinguishing factor in the PMU program's design studios is the reliance upon integrated studios that employ team teaching and student teams to collaboratively solve problems. Teams of instructors will be composed of individuals with distinctive specialties, enabling them to require students to make design decisions that optimize performance with respect to multiple disciplines.

These program characteristics will enable graduates of the PMU architecture program to gain employment in leading architectural firms and contribute to architectural design projects that are globally exemplary.

The program, open to both men and women, consists of 163 credit hours of classes over five years.

## PROSPECTIVE STUDENTS

Male and female students, who are interested in architecture, design and are good with numbers and math will flourish in this major. The program has:

- ↳ Innovative, technology-infused and student-centered learning environment.
- ↳ Top quality programs and curricula that caters to current market demands and also prepares for future challenges.
- ↳ Practice focused curriculum that prepares students for professional work in the field of Interior Design.
- ↳ Small class sizes and modern studios.

## PROGRAM OBJECTIVES

The PMU Department of Architecture and its faculty will provide education for future leaders and innovators in the architecture profession, create new knowledge about the built environment, provide resources for lifelong learning, and serve the KSA by increasing the quality of the environment of communities.

The Department of Architecture at PMU will offer a unique and distinguished education that prepares global citizens in the profession of architecture.

To address the fundamental and grand challenges of achieving economic, ecological, social, and aesthetic communities, its graduates will apply research-informed design and innovative technology.

## CAREER OPPORTUNITIES

This major will prepare students for architectural design practice in a variety of national and international venues.

## PROGRAM OUTCOMES

- ↳ Employ critical thinking and representation to ideate, design and present innovative and feasible built environments.
- ↳ Demonstrate technical documentation skills as well as operate technology used for architectural design and construction.
- ↳ Recognize the relationship of cultural differences, social and political influences, limited resources, and human behavior with the built environment.
- ↳ Produce built environments that demonstrate competency in barrier-free or universal design, knowledge of International Green Construction Codes and application of International Building Codes.
- ↳ Describe, analyze and produce projects that employ the principles of building practices and demonstrate knowledge of architectural systems, materials, construction methods and costs.
- ↳ Synthesize multifaceted variables into integrated architectural solutions.
- ↳ Identify and apply business principles needed for the professional practice of architecture.
- ↳ Use research-informed design processes.

## FACTS ABOUT THE PROGRAM

- ↳ Highly qualified faculty with hands-on, professional architectural design experience.
- ↳ Modern studio setting.